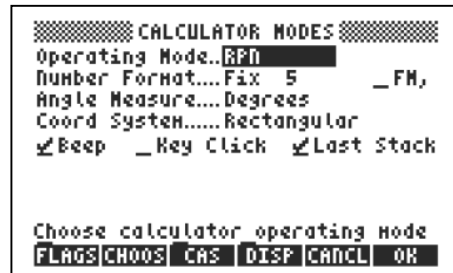


CODYCLOSE INSTALL PROCESS

1. Install the software that comes with the calculator onto your PC.
2. Connect the cable to the USB port; remembering the cable for the 48GII is not the same as for both the 49G+ and the 50G cables.
3. Turn the calculator **ON** and if prompted to recover the memory answer **NO**.

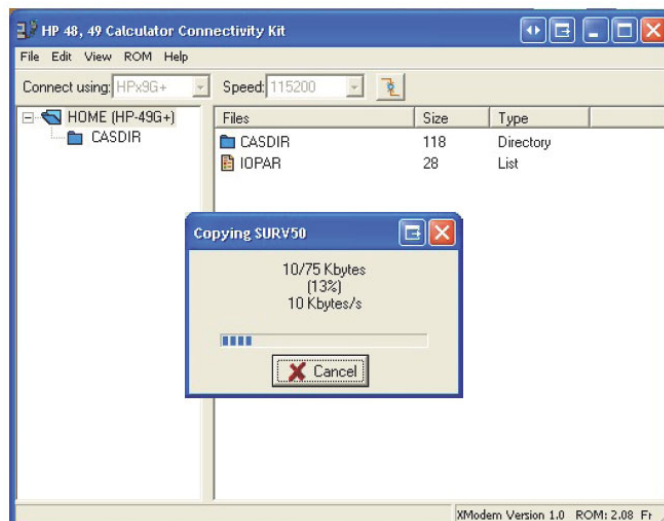
4. Place the calculator in RPN mode by pressing the **MODE** (Menu Key H) as shown in the diagram. To change from *Algebraic* to *RPN* select **CHOOS** (Menu Key B) then the Down Arrow (button directly above Menu Key P) followed by **OK** (Menu Key F).



5. Once complete select OK again to exit.
6. Now place the calculator into Xmodem Server mode by pressing the **Right Shift** (button directly above the **ON** key) followed by the Right Arrow (button directly below Menu Key F). The display will then look as shown in the diagram:



7. Start the connectivity software you just installed. Navigate to the **File** Menu then press **Connect**. Then hit **OK** when prompted to put the calculator into Xmodem Server mode as you did this in step 6.
8. Now find the file that corresponds to the calculator (i.e. SURV50 for the 50G and SURV48 for the 48GII etc.) in explorer and drag and drop into the windowpane where the files are displayed. Once the transfer begins the display will be as shown:



9. Once finished downloading navigate to the **File** Menu then press **Disconnect**. Then exit the program and pull the plug out of the calculator.
10. Press **VAR** button (Menu Key J)
11. On the calculator press **SURVxx** (Menu Key A) then **INSTL** (Menu Key B) to initiate the install process. A calculator specific licence number will be displayed on the screen, which you will need, to obtain the corresponding serial number. After you have obtained and entered the serial number press **CONT** (Menu Key A) and the calculator will confirm installation is complete by turning itself off.
12. Turn the calculator **ON** and the CodyClose menu options will appear along the bottom of the screen.